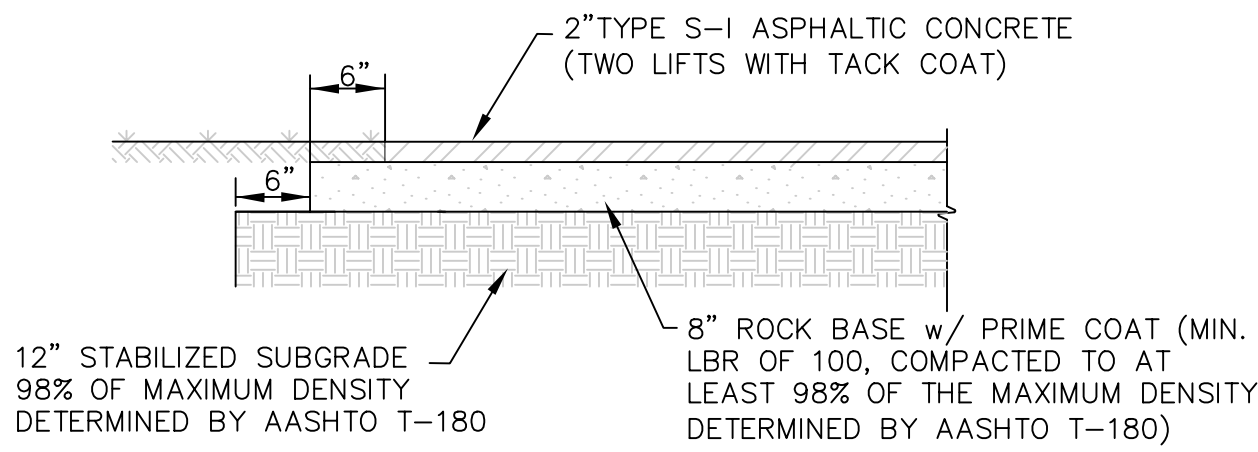
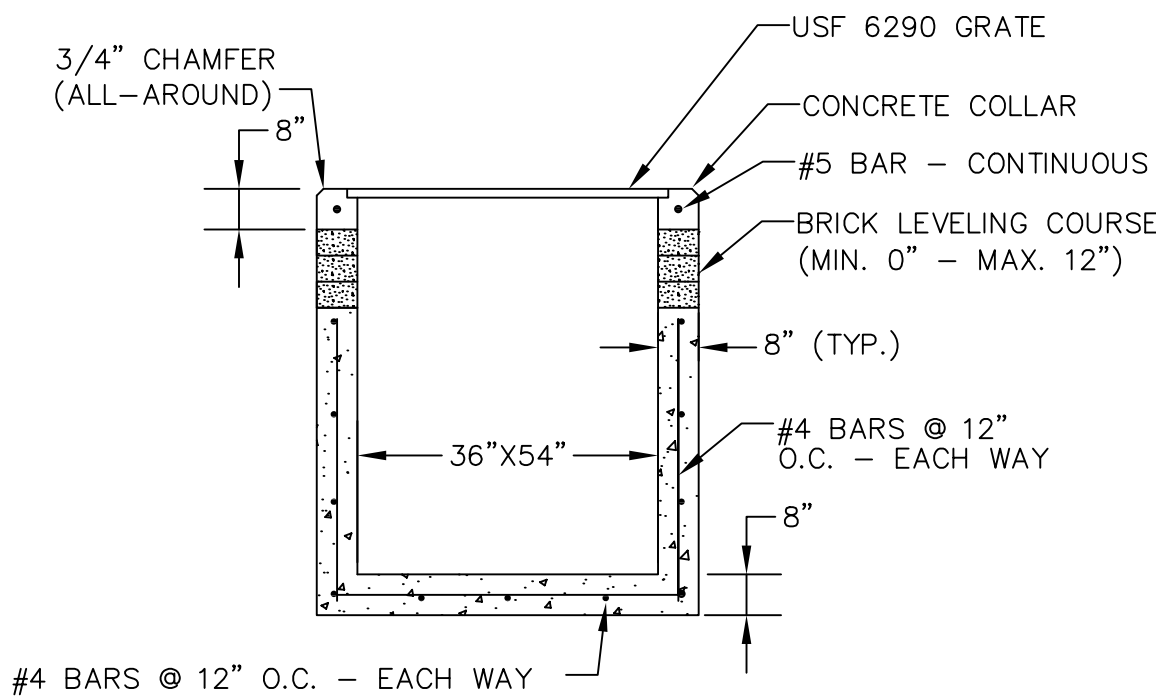


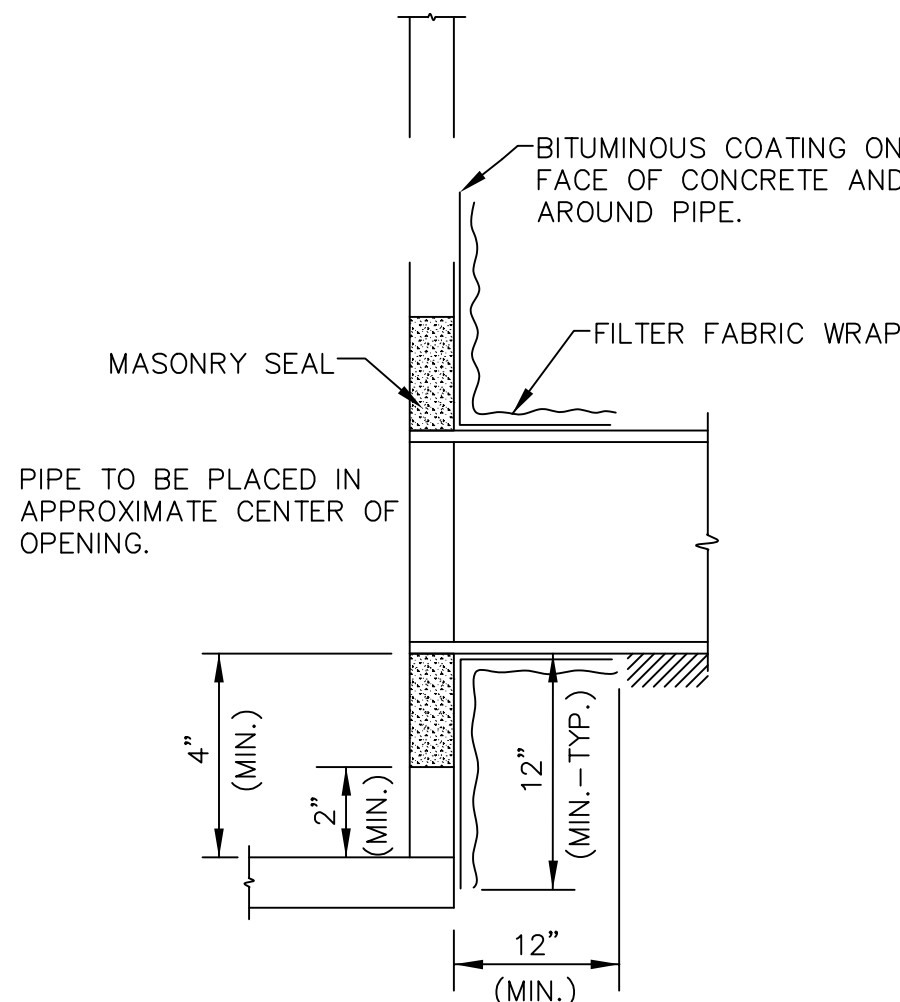
PERIMETER BERM DETAIL



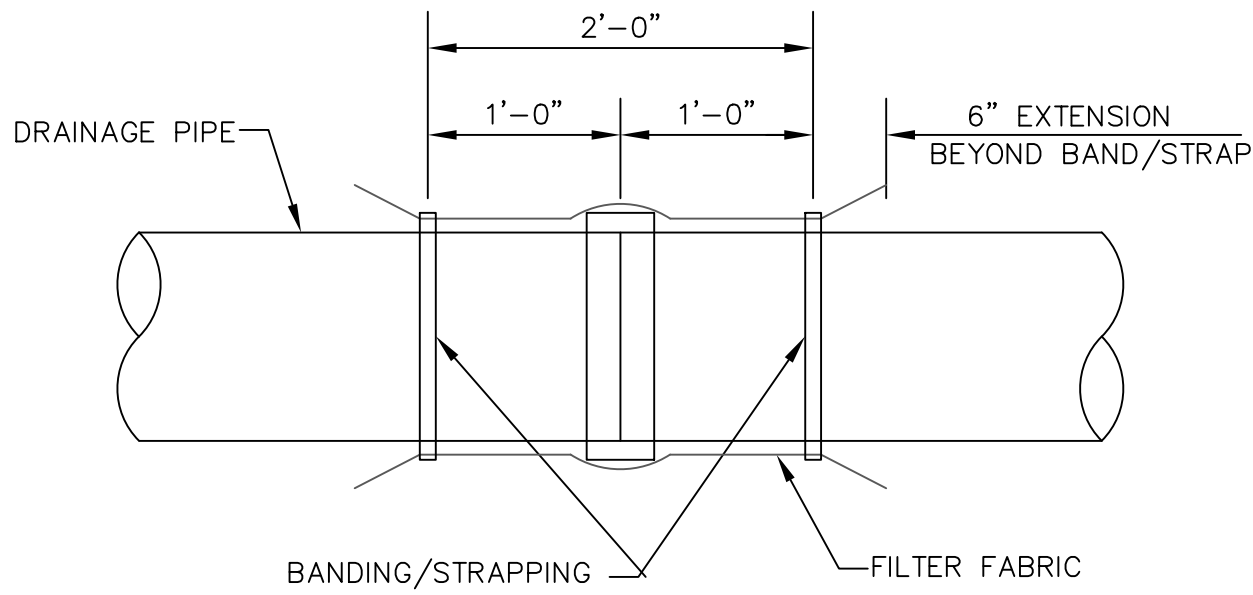
ASPHALT PAVEMENT SECTION



DRAINAGE INLET - TYPE E

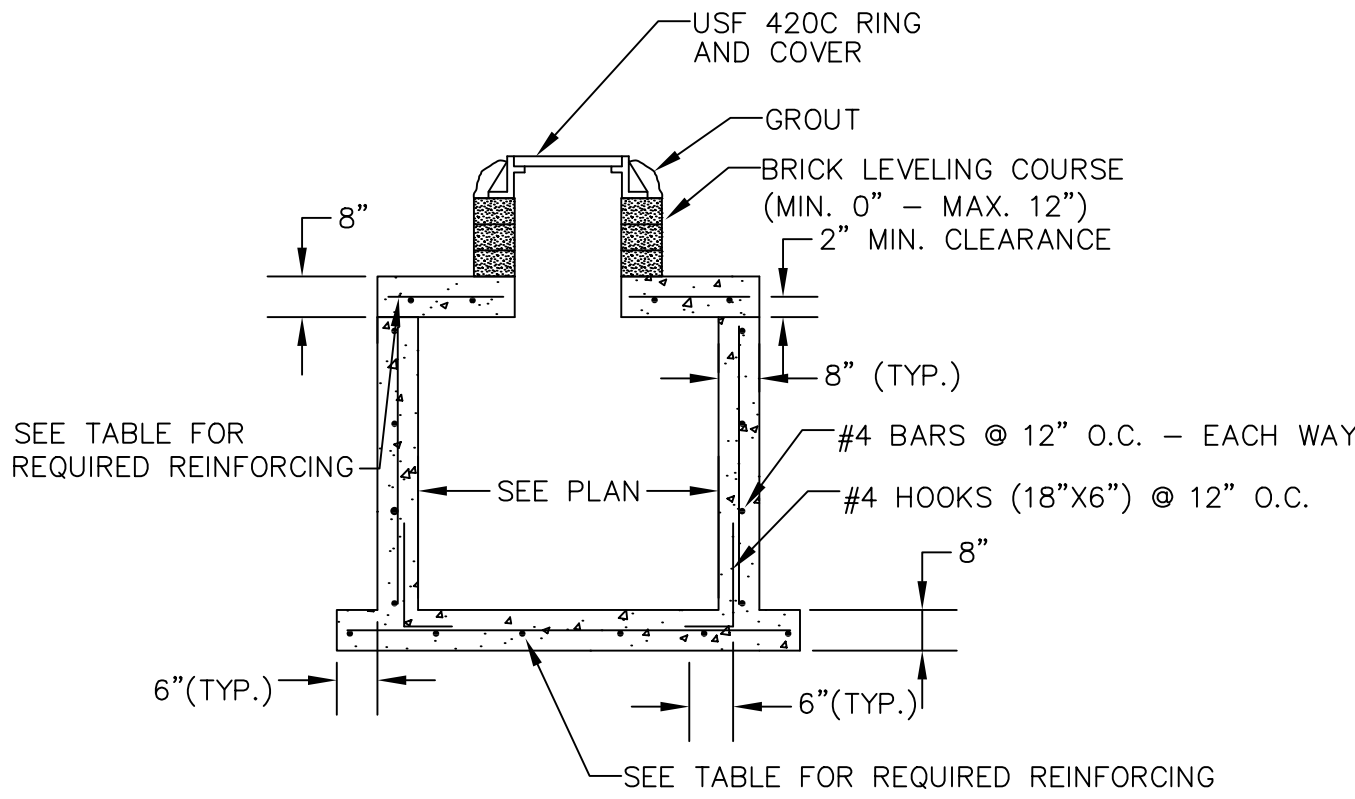


FILTER FABRIC WRAP ON GROUTED PIPE TO STRUCTURE JOINT

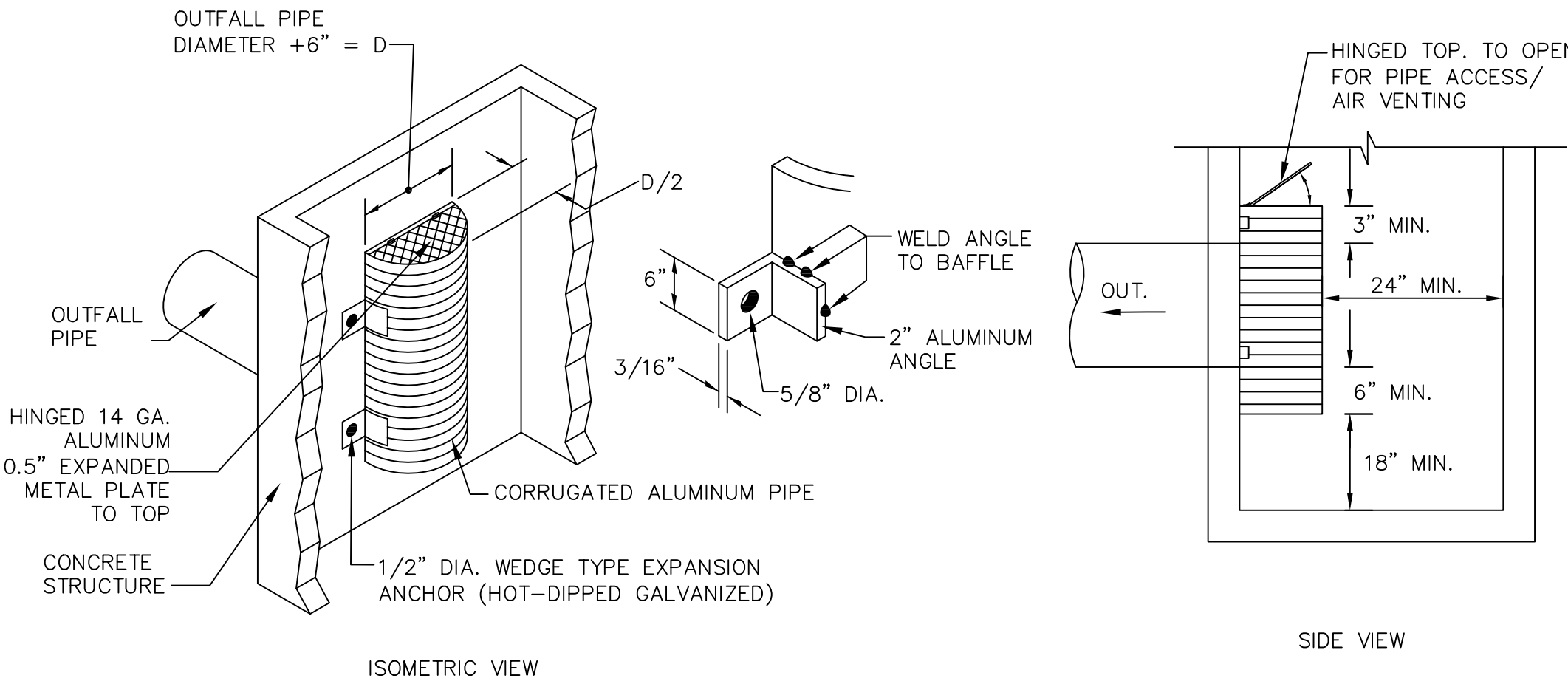


FILTER FABRIC JOINT WRAP

STRUCTURE SIZE	STEEL REINFORCING REQUIRED
4' DIAM.	#4 BARS @ 12" O.C. - EW
5' DIAM.	#4 BARS @ 10" O.C. - EW
6' DIAM.	#5 BARS @ 10" O.C. - EW
7' DIAM.	#6 BARS @ 10" O.C. - EW
8' DIAM.	#6 BARS @ 7" O.C. - EW

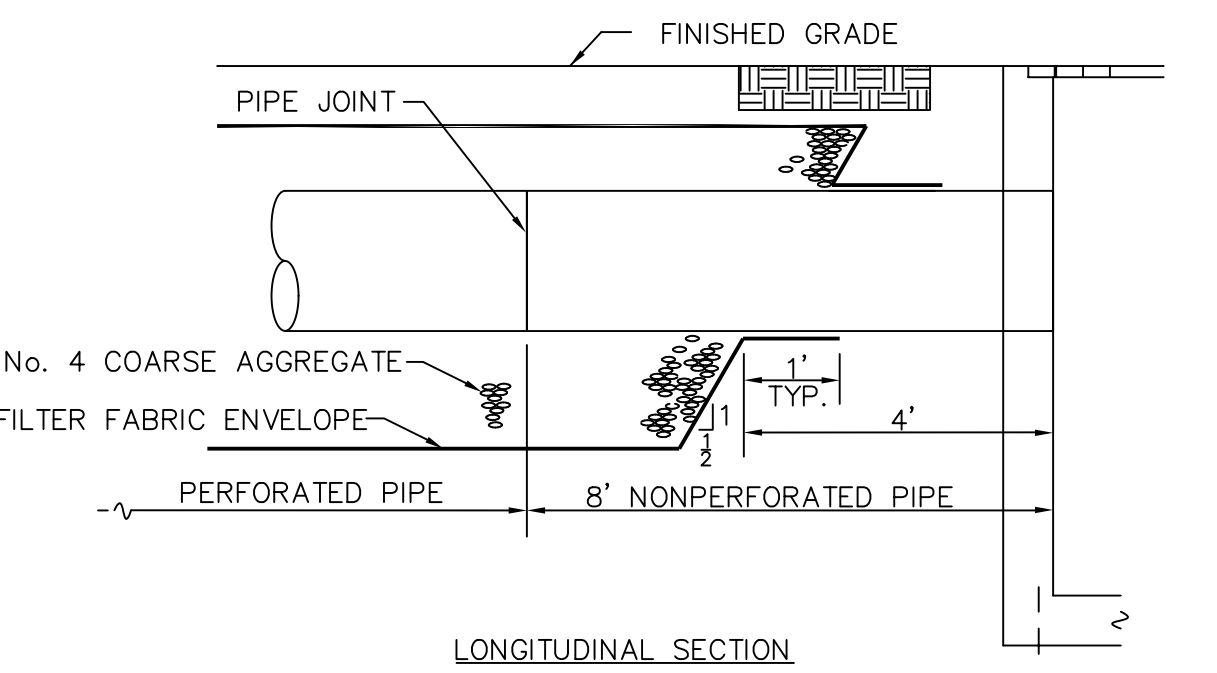


DRAINAGE MANHOLE

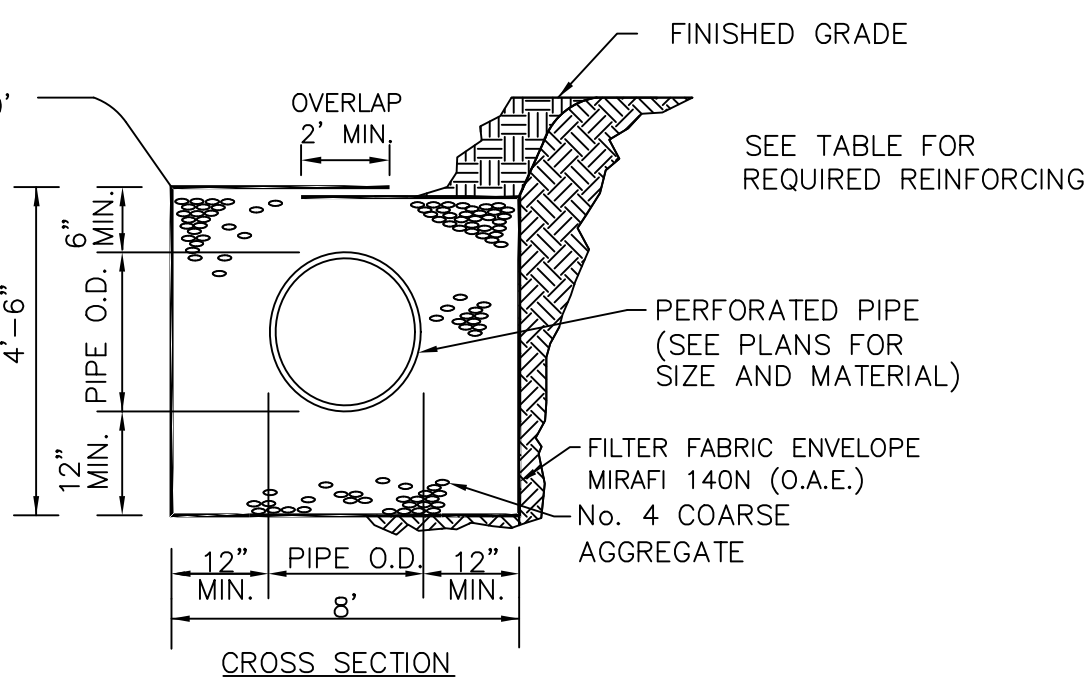


TOP OF BAFFLE SHALL BE 12 INCHES BELOW TOP OF STRUCTURE. BOTTOM OF BAFFLE SHALL BE 18 INCHES ABOVE BOTTOM OF STRUCTURE. BOTTOM OF BAFFLE SHALL BE 6 INCHES BELOW OUTFALL PIPE INVERT.

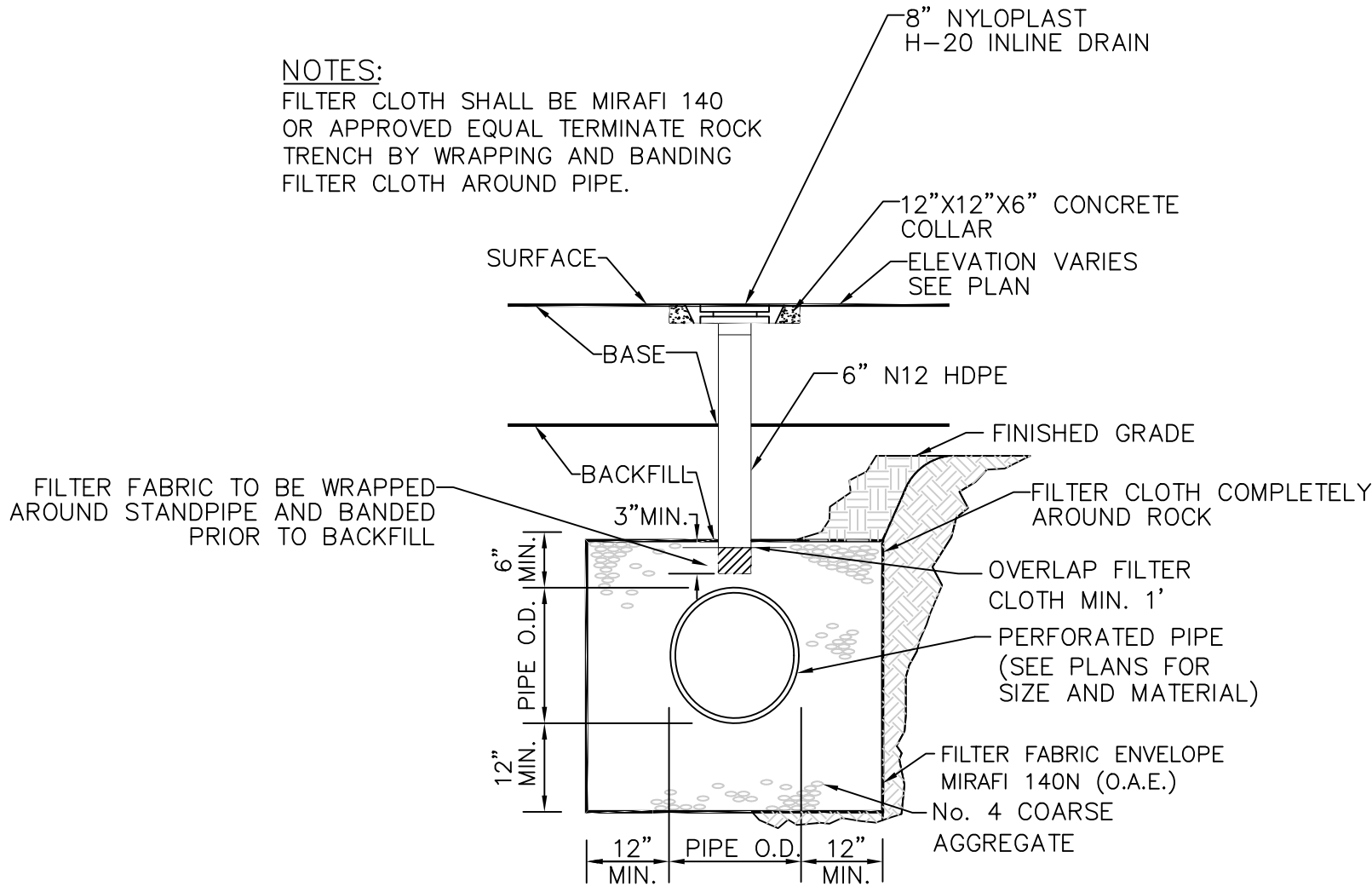
POLLUTION CONTROL BAFFLE



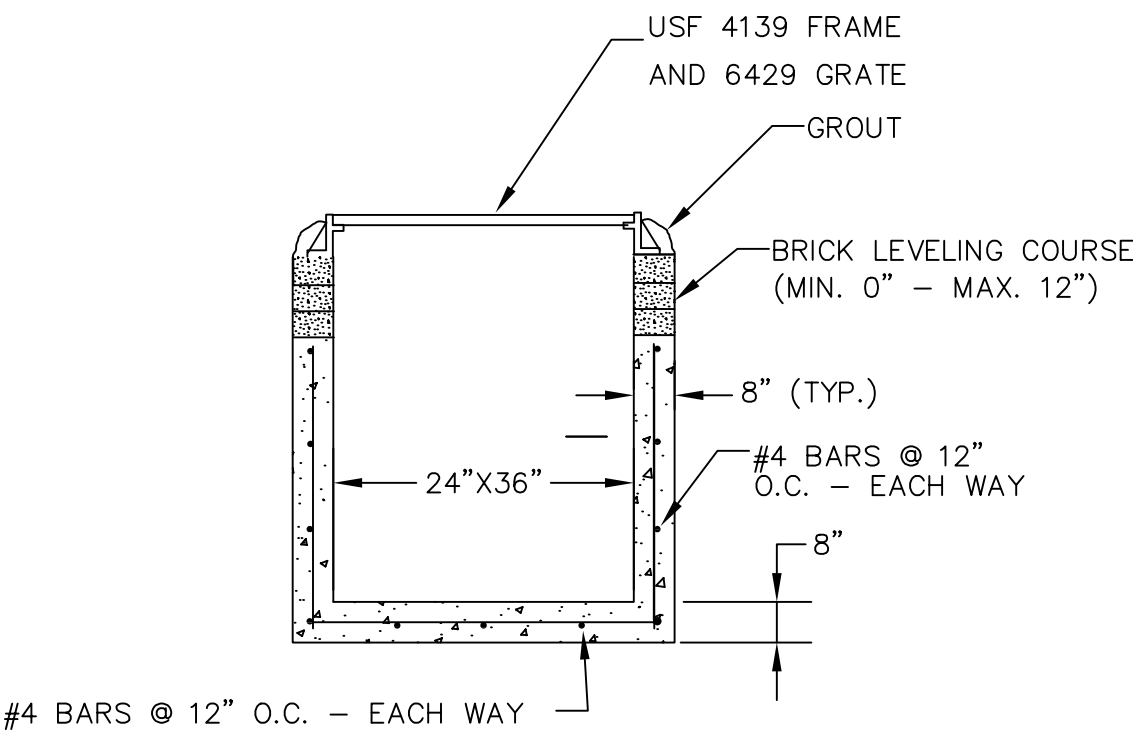
LONGITUDINAL SECTION



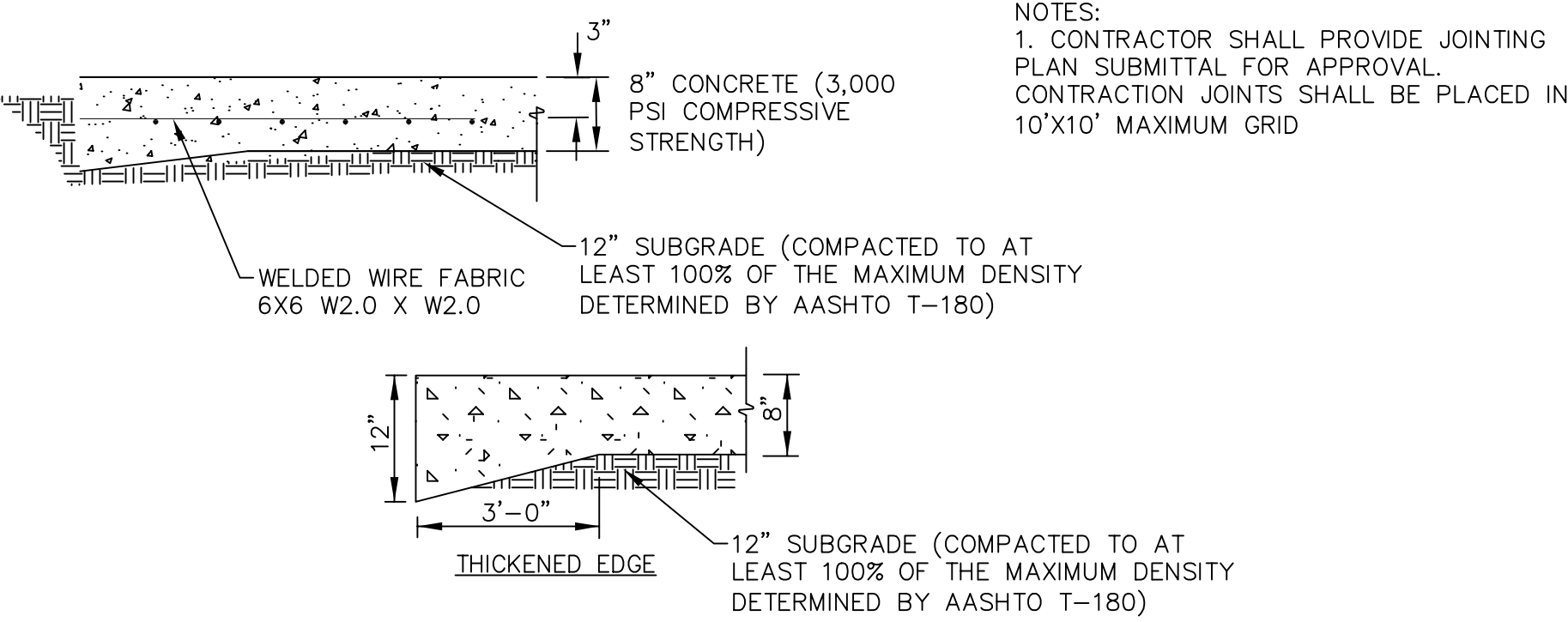
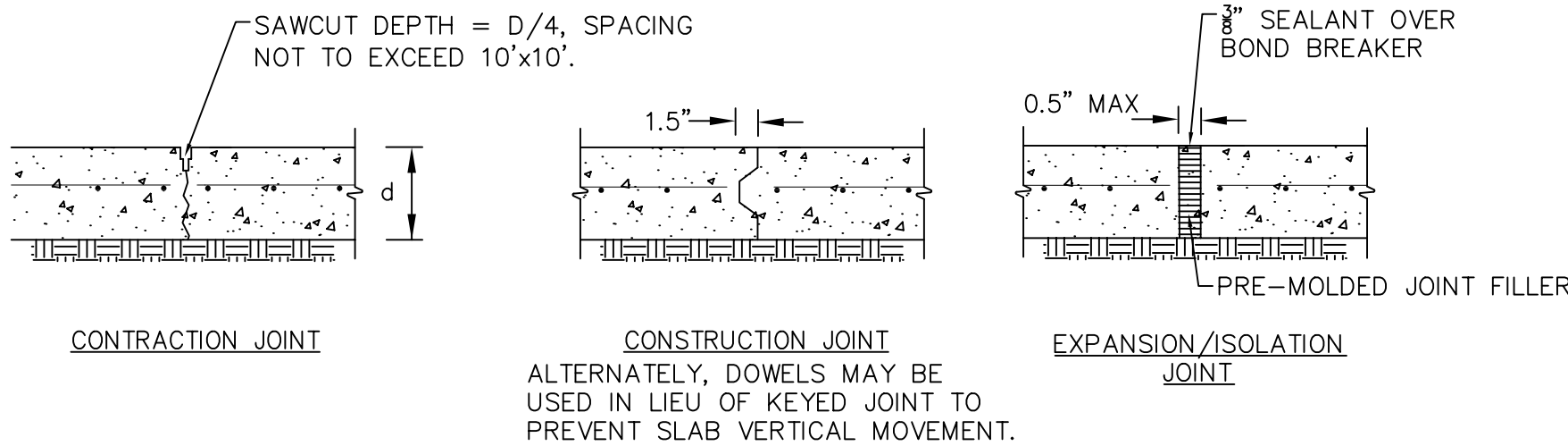
EXFILTRATION TRENCH



EXFILTRATION TRENCH VENT



DRAINAGE INLET - TYPE C1



8" CONCRETE PAVEMENT SECTION

90% SUBMITTAL

ADAM SWANEY, P.E. PROFESSIONAL ENGINEER LICENSE NO. 72235. THIS DOCUMENT HAS BEEN ELECTRONICALLY SIGNED AND SEALED BY ADAM SWANEY, P.E. USING A SHA-1 AUTHENTICATION CODE. PRINTED COPIES OF THIS DOCUMENT ARE NOT CONSIDERED SIGNED AND SEALED AND THE SHA-1 AUTHENTICATION CODE MUST BE VERIFIED ON ANY ELECTRONIC COPIES.

811 Know What's Below Call before you dig 1-800-487-2002

REVISIONS	NO.	DATE	REMARKS	BY

© COPYRIGHT 2022 BY ENGENUITY GROUP, INC. THIS DRAWING IS PROVIDED FOR INFORMATIONAL PURPOSES ONLY. UNLESS SIGNED AND SEALED BY A PROFESSIONAL ENGINEER REPRESENTING ENGENUITY GROUP, INC. Digitally signed by Adam Swaney Date: 2022.11.01 11:49:43 -04'00'

MARTIN BROWER INDUSTRIAL
1661 NW 12TH AVENUE
POMPANO BEACH, FLORIDA
DETAILS

A Higher Standard of Excellence
engenuity group inc.
ENGINEERS • SURVEYORS • GEOTECHNICAL ENGINEERS
1280 N. CONGRESS AVE., SUITE 101
WEST PALM BEACH, FLORIDA 33409
PH (561) 655-1151 • FAX (561) 632-5390
WWW.ENGENUITYGROUP.COM CERTIFICATE OF AUTHORIZATION #7095

DATE	DR.	PROJ.	ENGR.	PROJ.	MAN.	CHECKED
OCTOBER 2022	RB	ACS	RB	ACS		